

応用聴音

アルトサクソ



1.

実音

記譜

2.

実音

記譜

3.

実音

記譜

応用聴音

4.

実音

記譜

5.

実音

記譜

6.

実音

記譜

応用聴音

7.

実音



記譜



Musical notation for exercise 7, consisting of two staves. The top staff is labeled '実音' (Real Sound) and the bottom staff is labeled '記譜' (Written Score). Both are in 4/4 time and G major. The melody in the real sound part starts on G4 and moves through various intervals, including a tritone (F#4-Bb4) and a diminished fifth (F#4-C5).

8.

実音



記譜



Musical notation for exercise 8, consisting of two staves. The top staff is labeled '実音' (Real Sound) and the bottom staff is labeled '記譜' (Written Score). Both are in 3/8 time and G major. The melody in the real sound part starts on G4 and moves through various intervals, including a tritone (F#4-Bb4) and a diminished fifth (F#4-C5).

9.

実音



記譜



Musical notation for exercise 9, consisting of two staves. The top staff is labeled '実音' (Real Sound) and the bottom staff is labeled '記譜' (Written Score). Both are in 3/4 time and G major. The melody in the real sound part starts on G4 and moves through various intervals, including a tritone (F#4-Bb4) and a diminished fifth (F#4-C5).

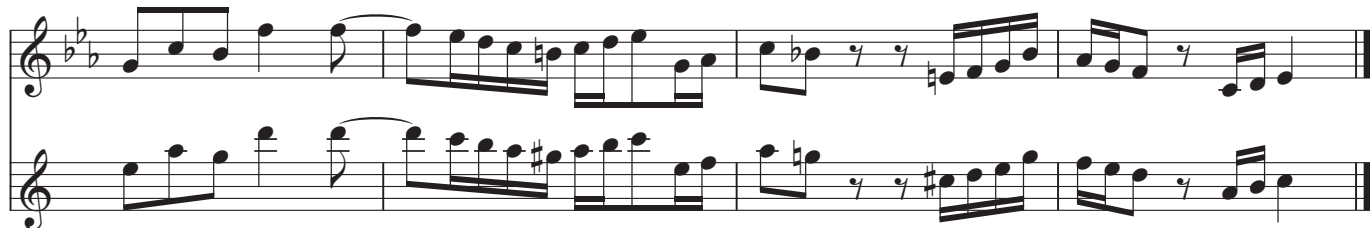
応用聴音

10.

実音



記譜



11.

実音



記譜



12.

実音



記譜

